

Development Board Schematic

Based on ZU3EG Coreboard

TABLE OF CONTENTS

- 1 Title Page
- 2 PowerSystem
- 3 BTB
- 4 TYPE_C
- 5 PCIE
- 6 SATA
- 7 DisplayPort
- 8 SFP+
- 9 LCD
- 10 HDMI
- 11 DebugUART/JTAG/BOOT
- 12 LPC_FMC
- 13 PMOD/CAN
- 14 Arduino
- 15 TriModeEthernet
- 16 MISC
- 17 MEC
- 18 CHANGELIST

DESIGN CONSIDERATIONS

DESIGN NOTE:
Example text for informational
design notes .

DESIGN NOTE:
Example text for cautionary
design notes.

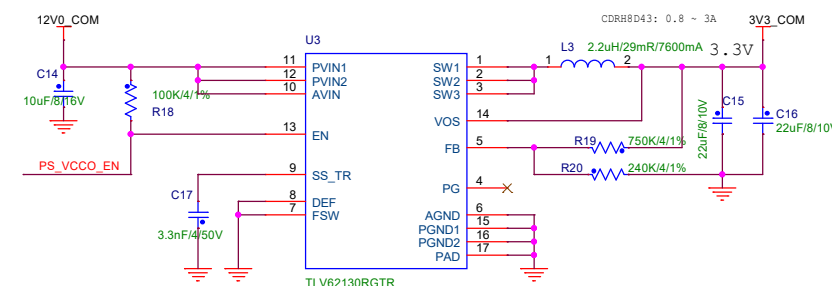
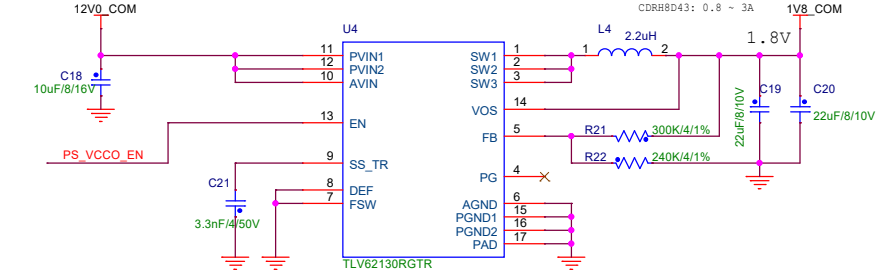
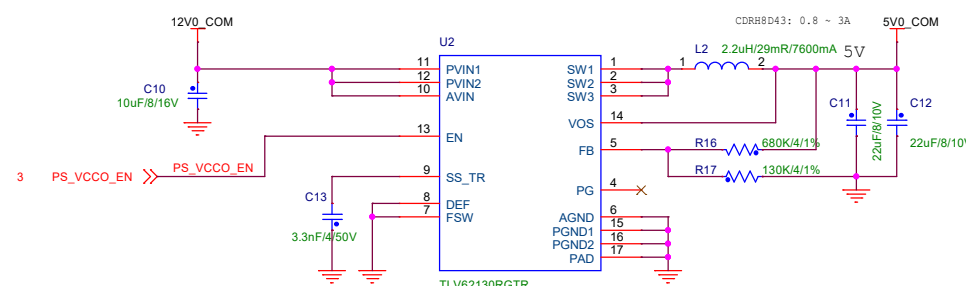
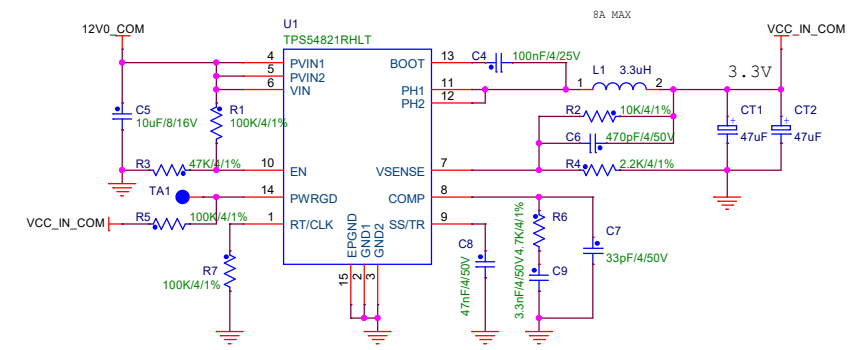
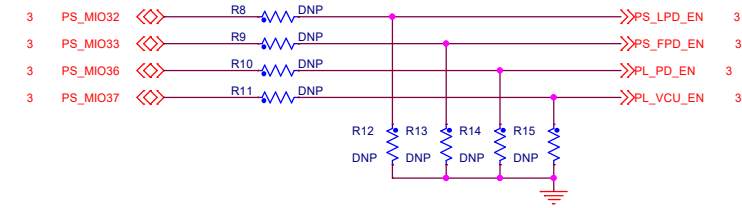
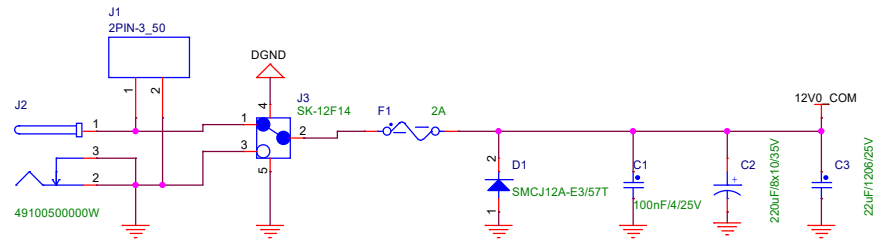
DESIGN NOTE:
Example text for critical
design notes.

LAYOUT NOTE:
Example text for critical
layout guidelines.

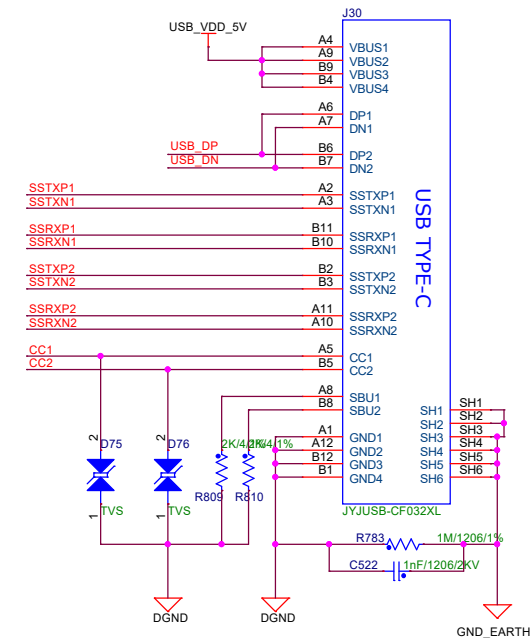
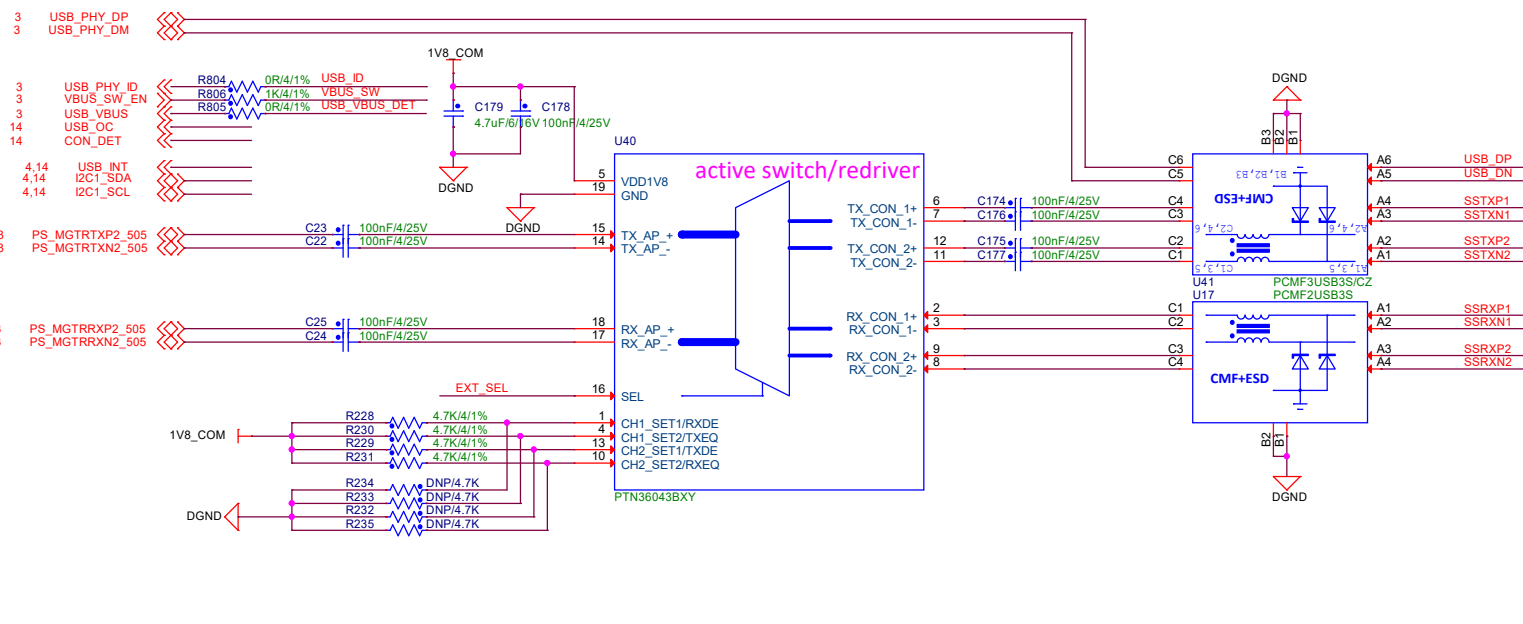
NOTES:

- 1) Unless otherwise specified, resistors have 5% tolerance.
- 2) Unless otherwise specified, capacitors have 20% tolerance.

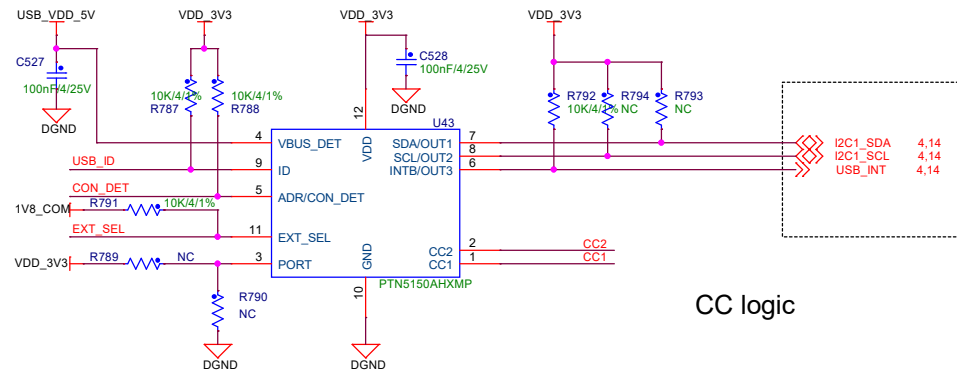
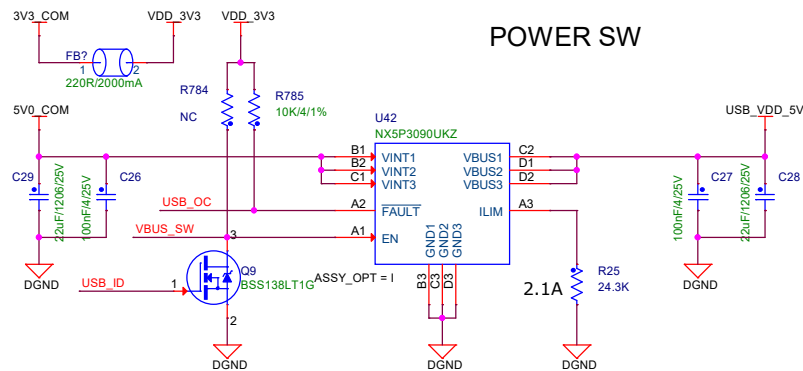
IMPORTANT NOTICE:



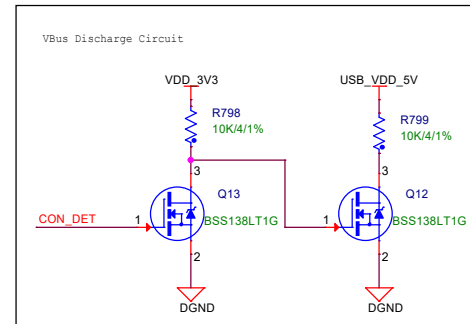
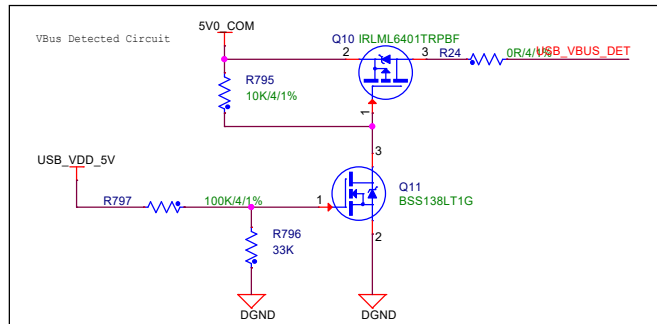
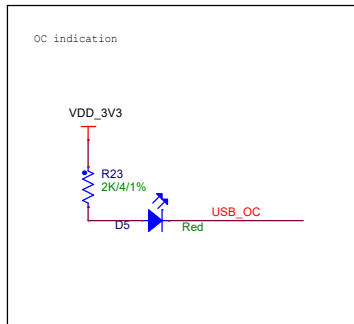
USB3.0 TYPE-C

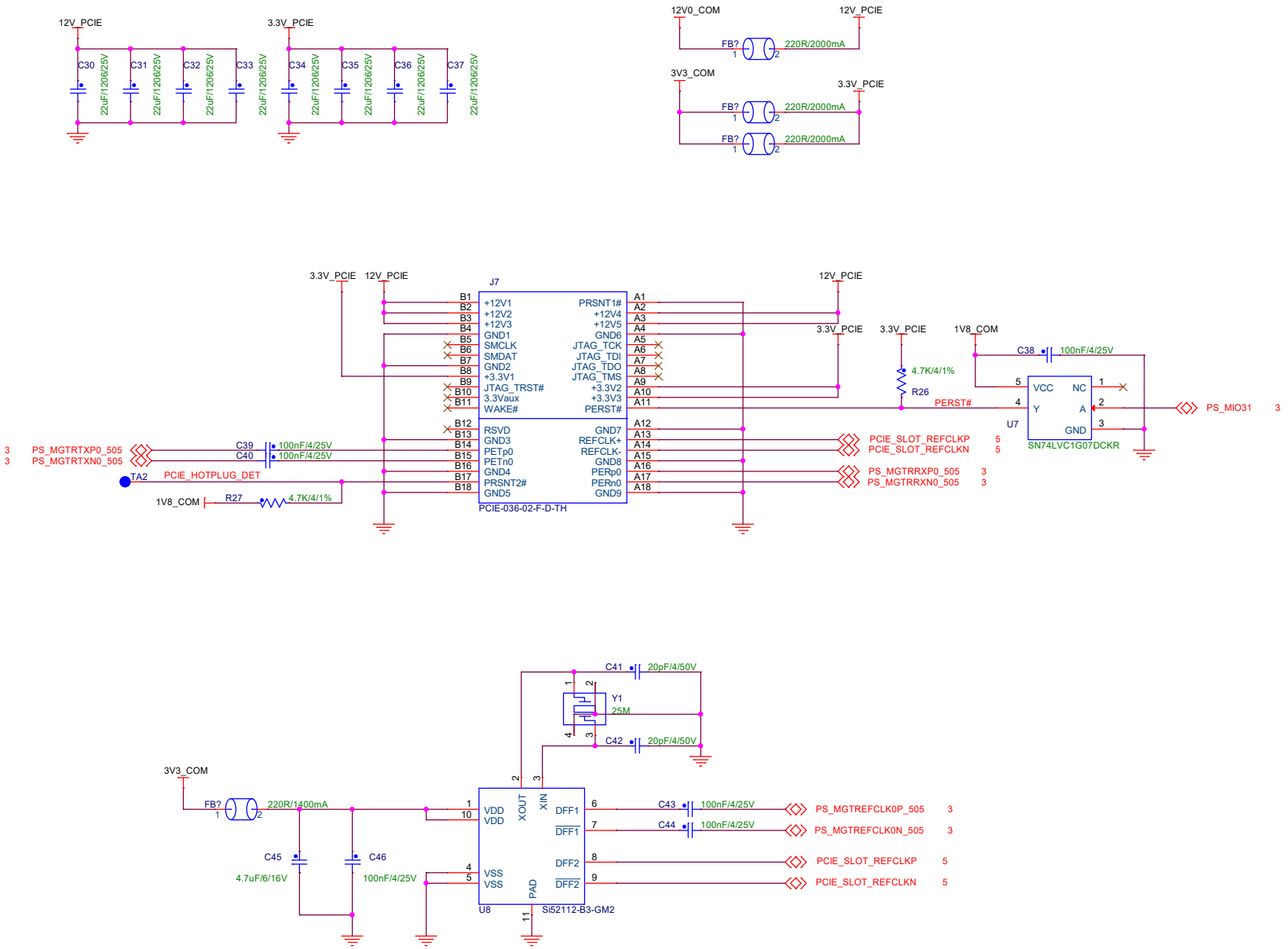


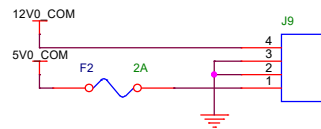
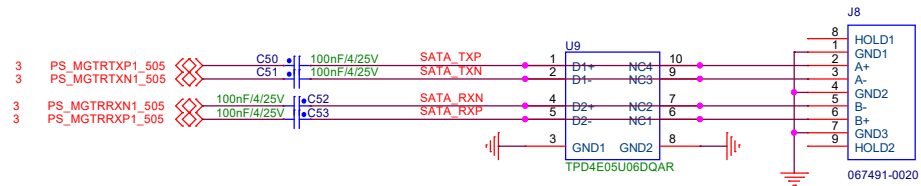
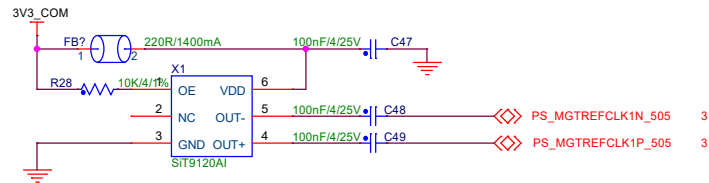
POWER SW

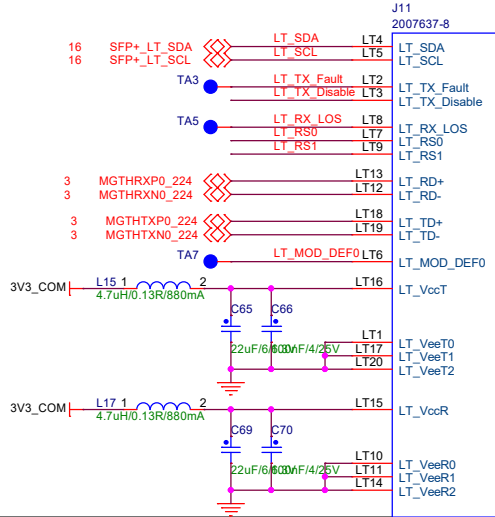
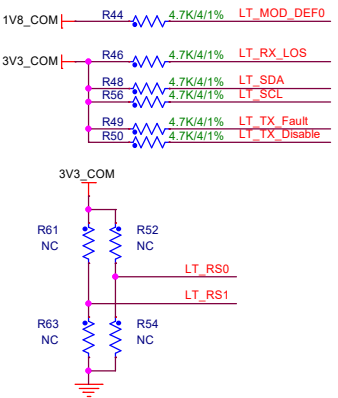
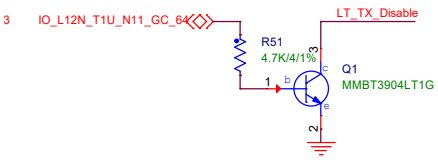


CC logic



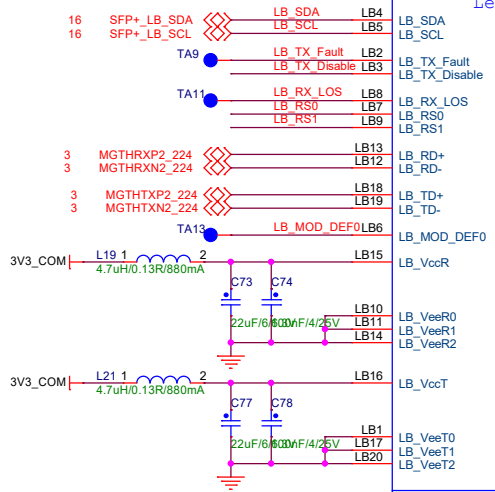
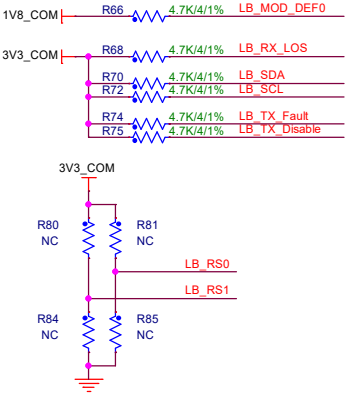
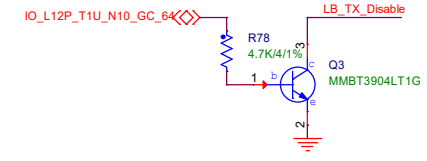
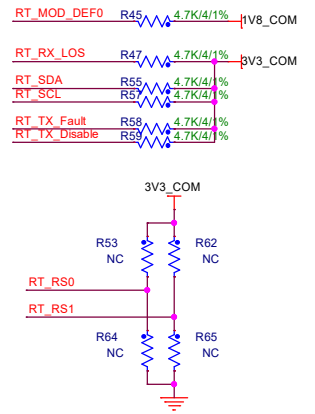
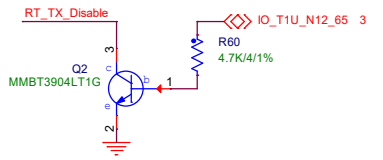






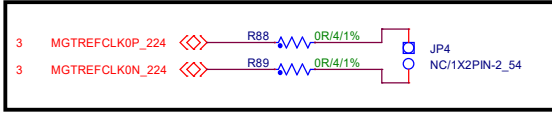
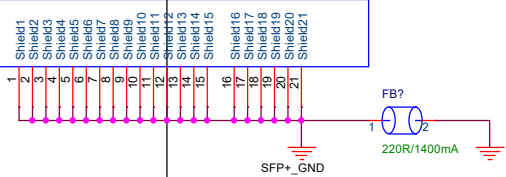
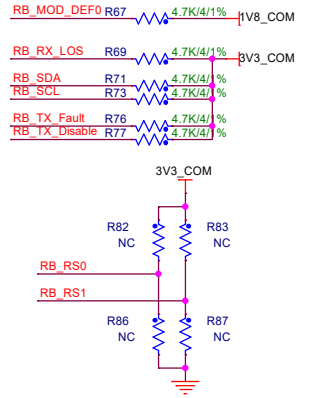
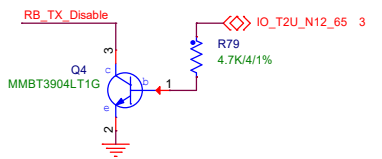
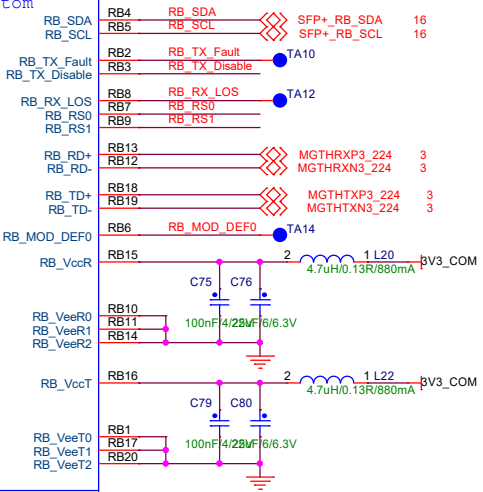
LeftTop

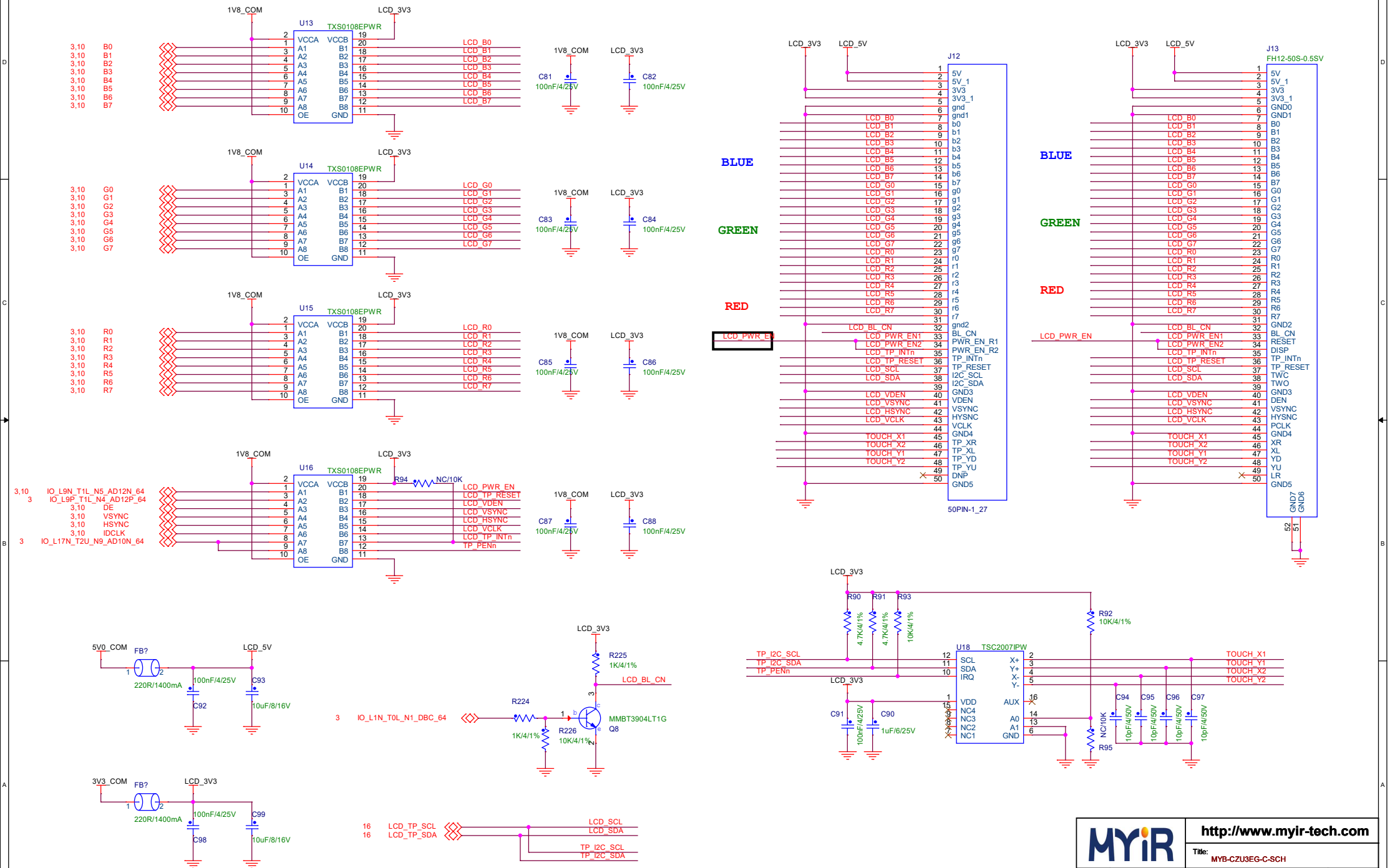
RightTop



LeftBottom

RightBottom

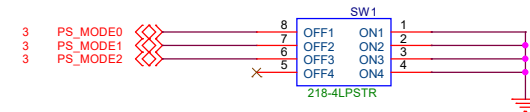
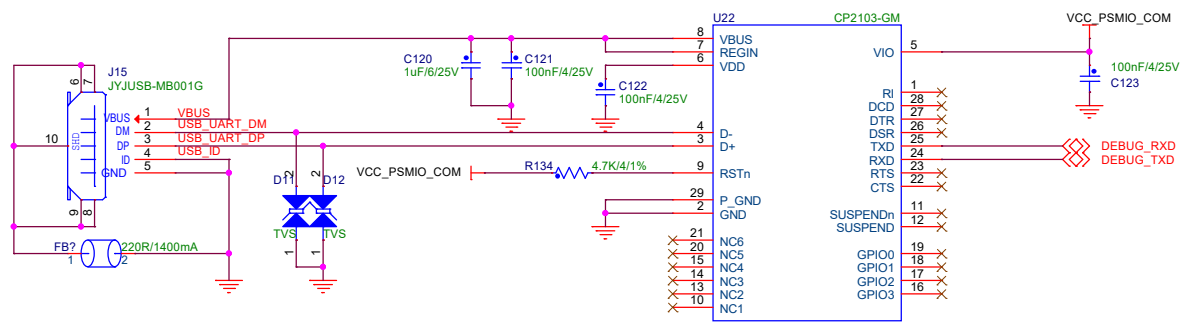






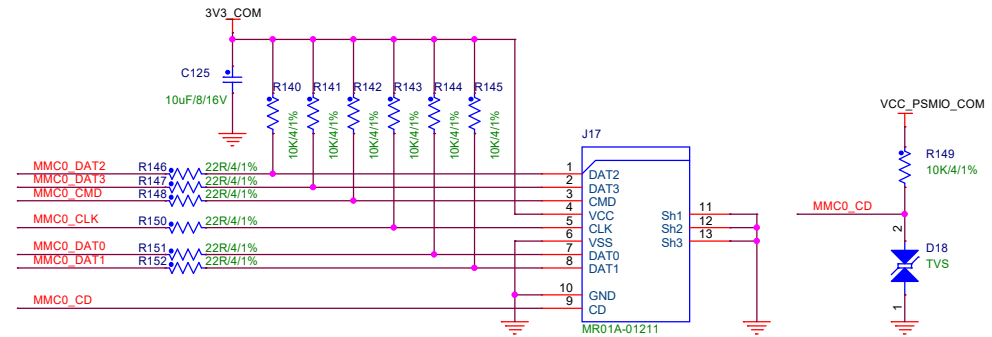
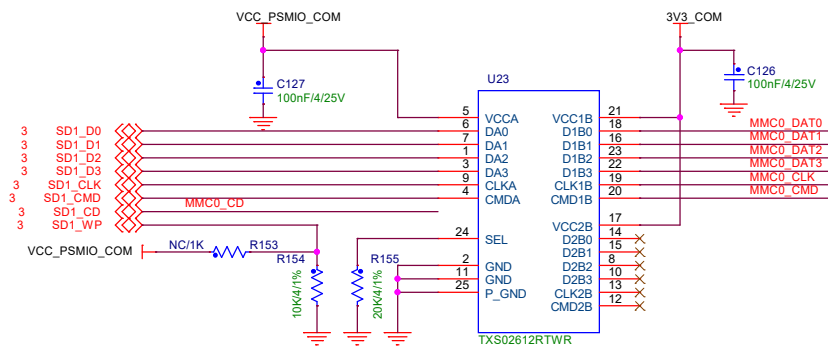
DEBUG

BOOT

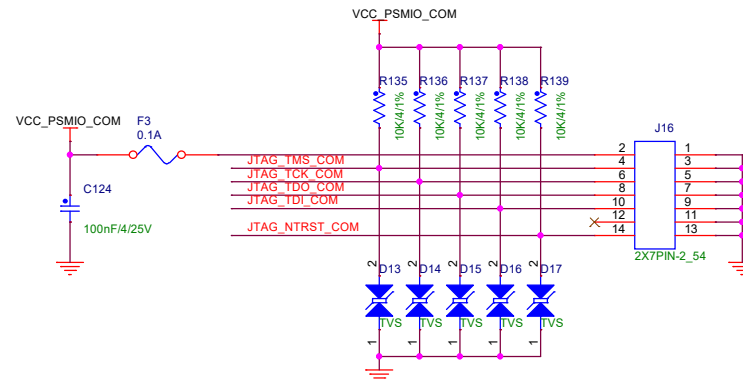
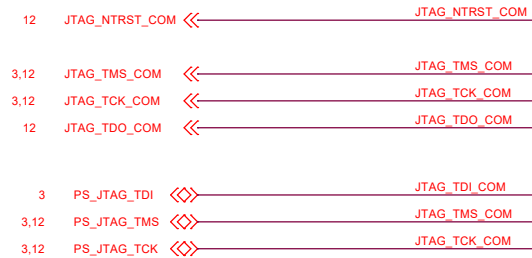


BootMode	PS_MODE3	PS_MODE2	PS_MODE1	PS_MODE0
JTAG	0	0	0	0
QSPI32	0	0	1	0
SD1	0	1	0	1
eMMC18	0	1	1	0

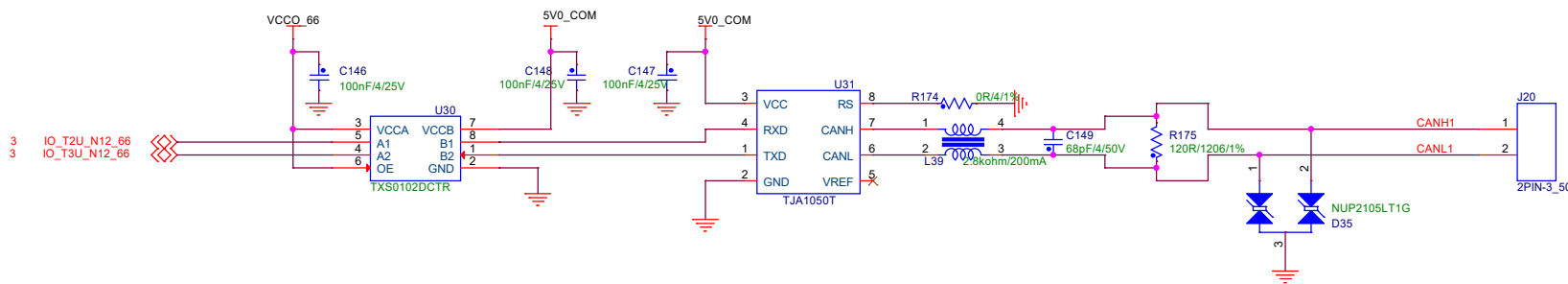
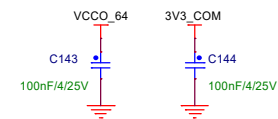
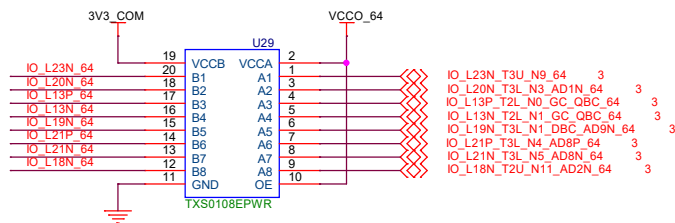
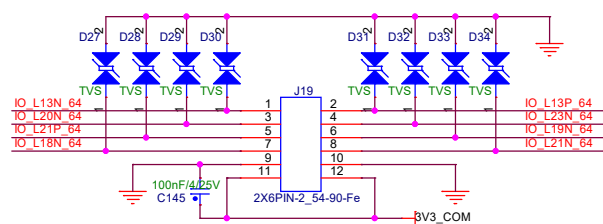
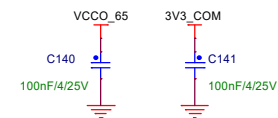
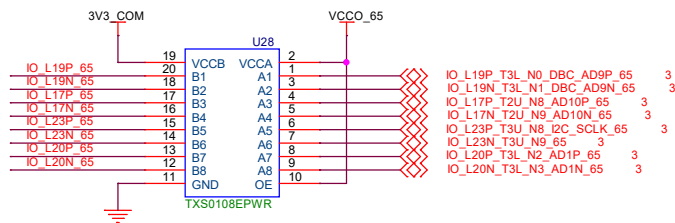
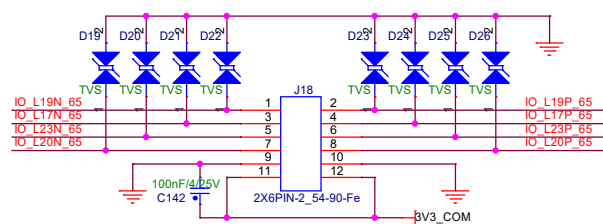
TF

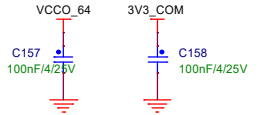
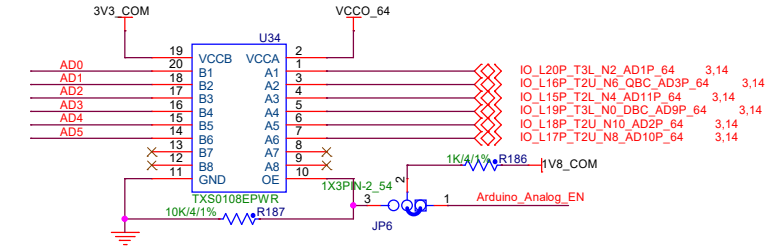
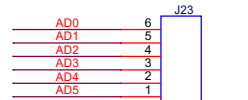
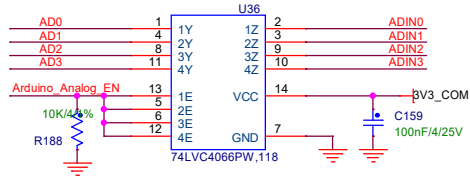
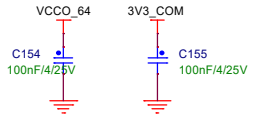
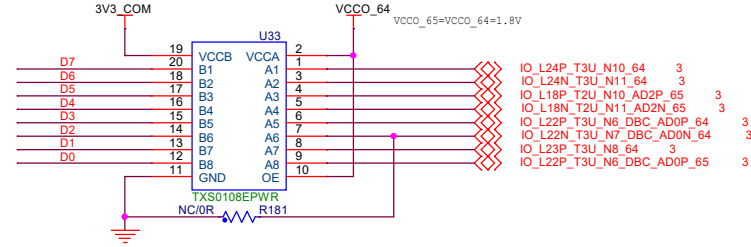
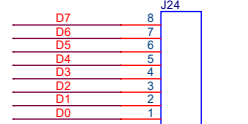
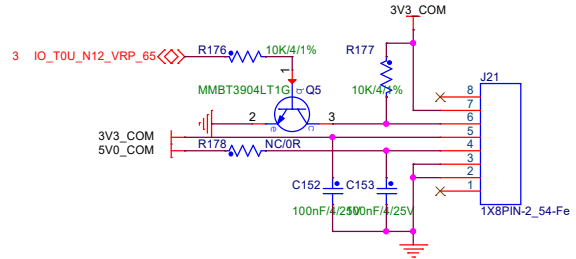
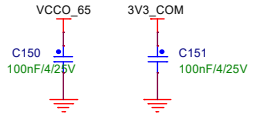
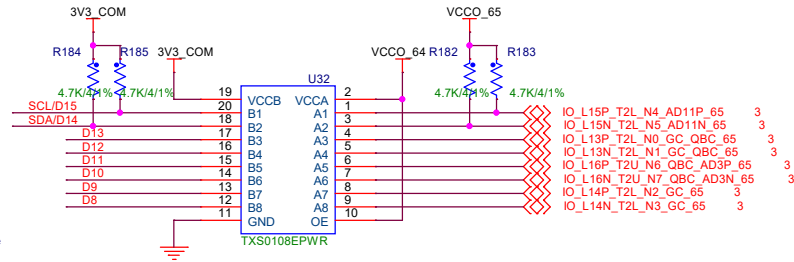
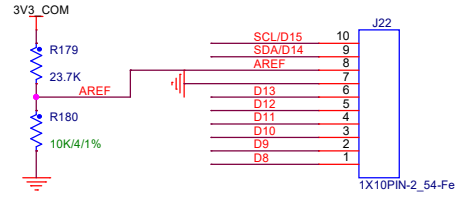
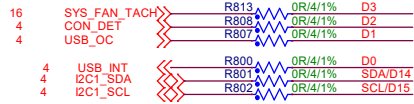


JTAG

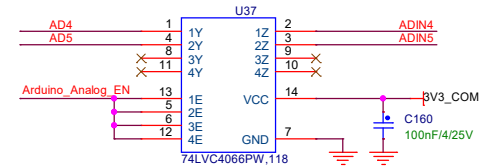
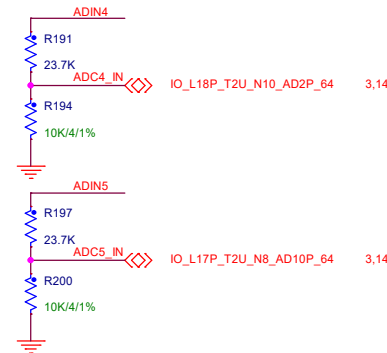
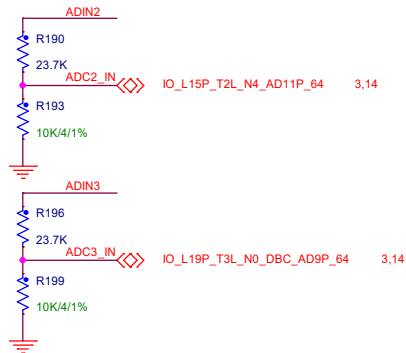
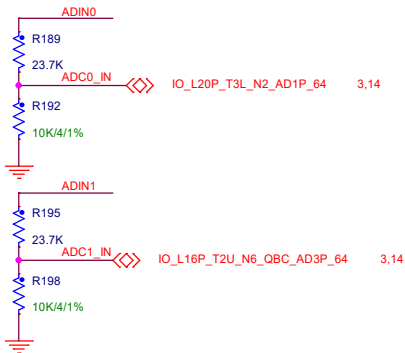


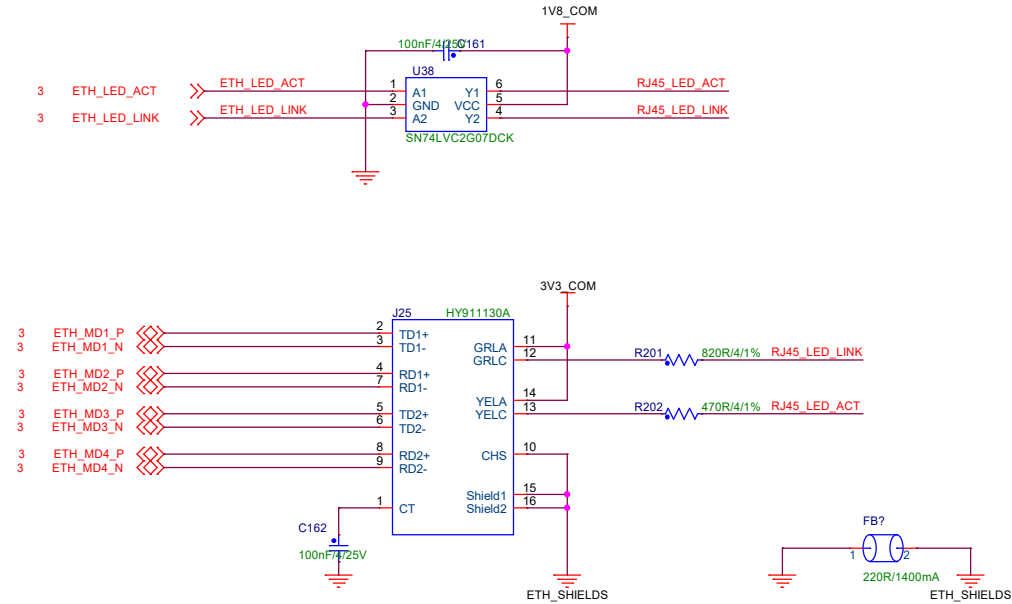




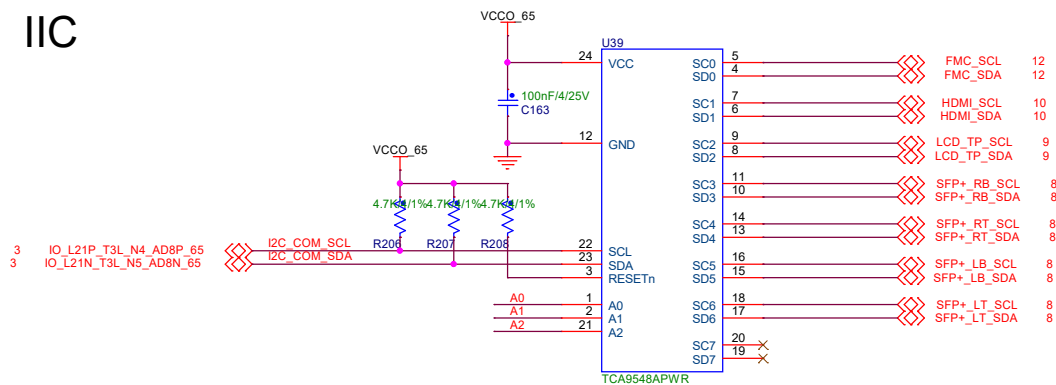


Notes:
1.Connect Pin1-2 to use AD0-5 as analog signals output from Arduino Module(Default).
2.Connect Pin3-2 to use AD0-5 as digital IOs.

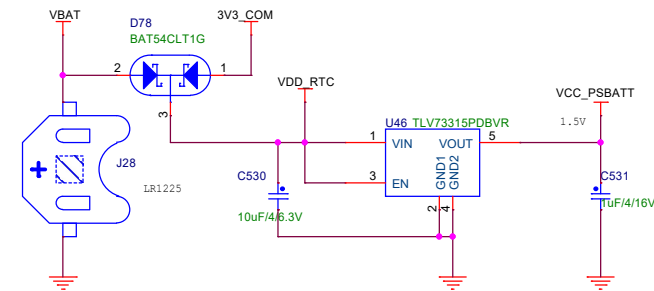




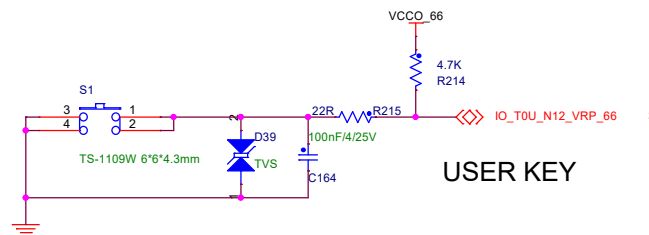
IIC



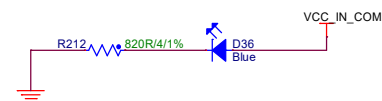
RTC



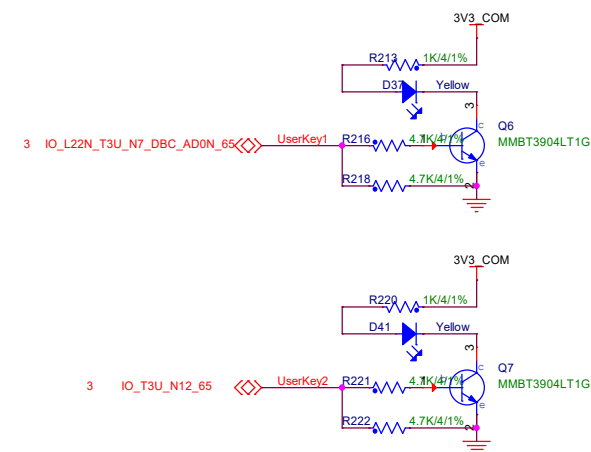
KEY



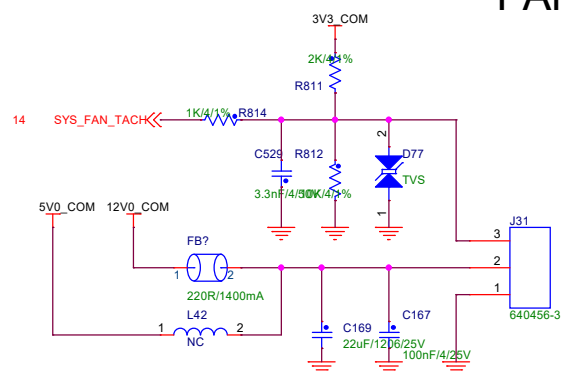
POWER LED



USER LED

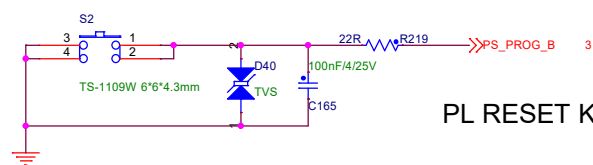


FAN

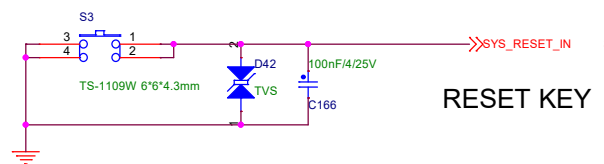


Cooling Fan Connector.

USER KEY

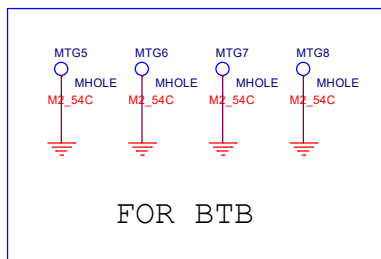


PL RESET KEY

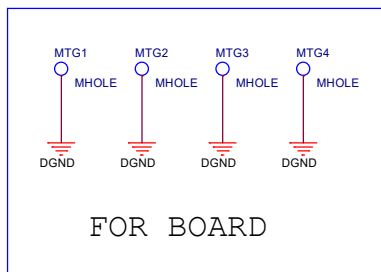


RESET KEY

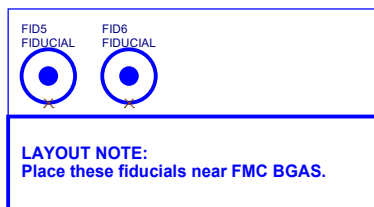
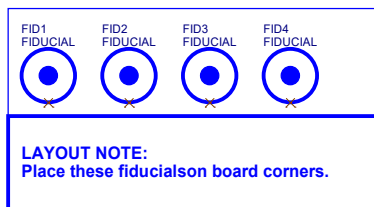
BTB MOUNTING HOLES



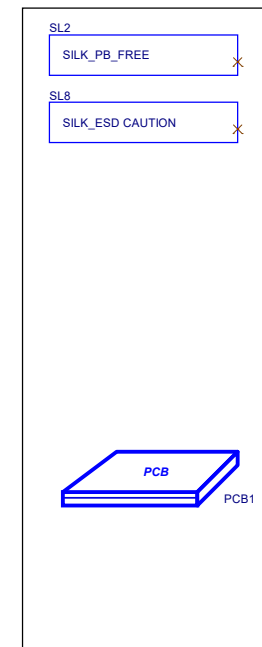
PCB MOUNTING HOLES



PCB FIDUCIAL



Silkscreens AND Labels



- V1.2

Release
- V1.3

1 , Add SFP cage

2 , Change RTC power Circuit

3 , Fixed Audrino schematic error